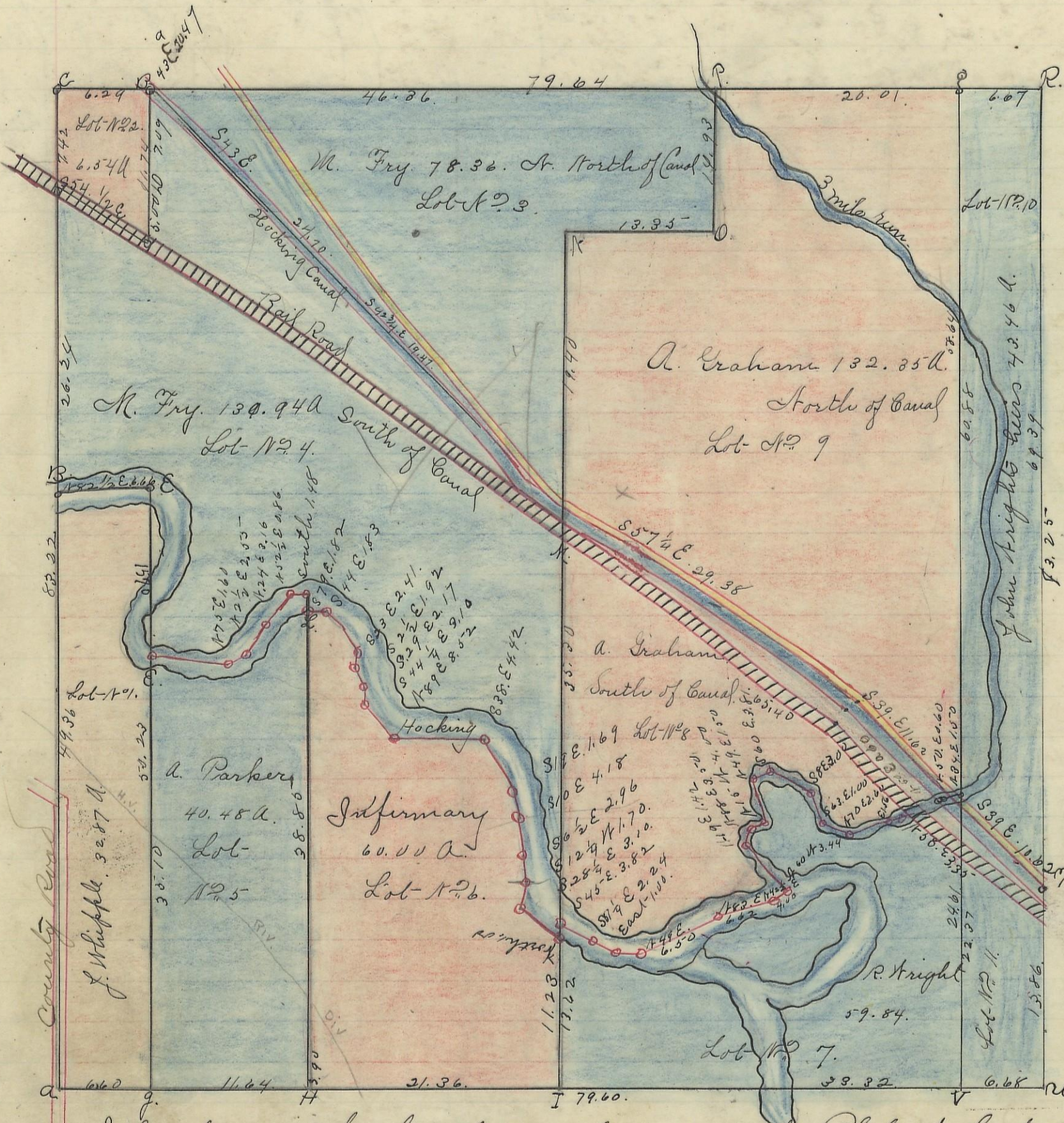


GREEN, No. 13, Range 16, Section No. 27



Proto.	Bearing of Tree	Number in Links	Distance from Proto	Remarks
A	N. oak	16	168 E.	19 original
	Do.	18	11.50 N.	12 S.N. cor Sec 27
B	Sycamore	12	11.52 E.	315 North of River
C	Apple tree	12	11.70 1/2 E.	488 N.N. cor Sec 27.
D	Walnut	9	11.37 1/2 N.	93
E	N. Walnut	8	8.84 N.	107
F	elm	5	8.59 1/2 E.	156
G	Sycamore	12	8.73 E.	15 1/2
H	N. Oak	14	11.22 N.	32
I	N. Cherry	7	8.80 1/2 N.	163
J	N. oak	10	11.25 E.	36
K	Sycamore	12	8.85 1/2 N.	742 20 The W of G. Cor
L	N. Walnut	9	11.86 1/2 E.	20
M	Do.	6	11.41 1/2 N.	25
N	Sycamore	12	11.76 1/2 E.	48 on South Bank
O	elm	2	8.34 1/2 N.	37 1/2
P	N. Walnut	7	South	238. South of canal
Q	Sycamore	5	8.23 1/2 N.	22
R	Do.	5	11.81 E.	40
S	Sycamore	24	8.48 1/2 N.	70
T	N. oak	15	8.01 1/2 E.	67
U	Sycamore	10	8.83 1/2 E.	9 1/2
V	N. oak	6	11.23 E.	16.
W	Beech	20	11.15 E.	44. on sect line
X	elm	12	8.37 E.	20 1/2
Y	N. Walnut	14	11.42 1/2 N.	61 1/2
Z	Sycamore	8	8.73 1/2 N.	59
AA	Key stone	12	8.34 N.	100
AB	Apple tree	12	5.1 1/2 E.	108 South of canal
AC	Beech	10	8.22 E.	8 S.E. cor of sec
AD	N. Walnut	12	11.86 1/2 E.	20 N.W. cor of 1/2
AE	Beech	24	5.5 E.	166 South of canal

J. Whipple	Lot No. 1.	32.87
G. Smith	" " 2.	6.54
M. Fry	" " 3-78.36	
"	" " 4-130.94	209.80
A. Parker	" " 5-	40.88
"	" " 6.	60.00
R. Knight	" " 7.	59.84
A. Graham	" " 8. 65.40	
"	" " 9-132.35	197.75
John Knight's heirs	" " 10-10.4346	
"	" " 11-12.0	5.556
		Am't. 662.74

Variations
10.45 1/2 N

I hereby certify the above to be a correct Plat of Section No. 27, Township No. 13, Range No. 16, Ohio Company's purchase Hocking County Ohio, containing 662.74 Acres. Surveyed 1868. By Levi Davis Sur. G. C. W. Received & Recorded. Jan 2nd 1869.

Levi Davis Sur. G. C. W.

I hereby certify the above to be a true copy.

P. D. Sloan Recdr

The above Plat transferred from Plat Book "A" page 104. Record of fractional Lots, G. C. W. May 21 1901.

P. D. Sloan Recdr
G. C. W.

Scale 10 chs to an inch