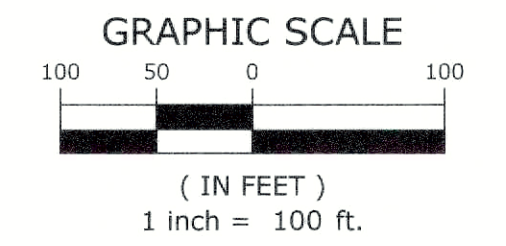
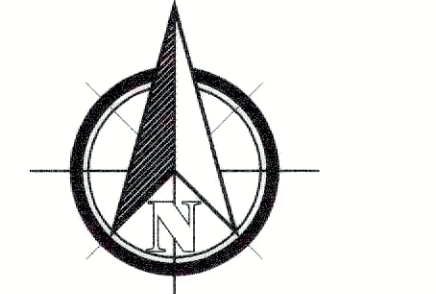
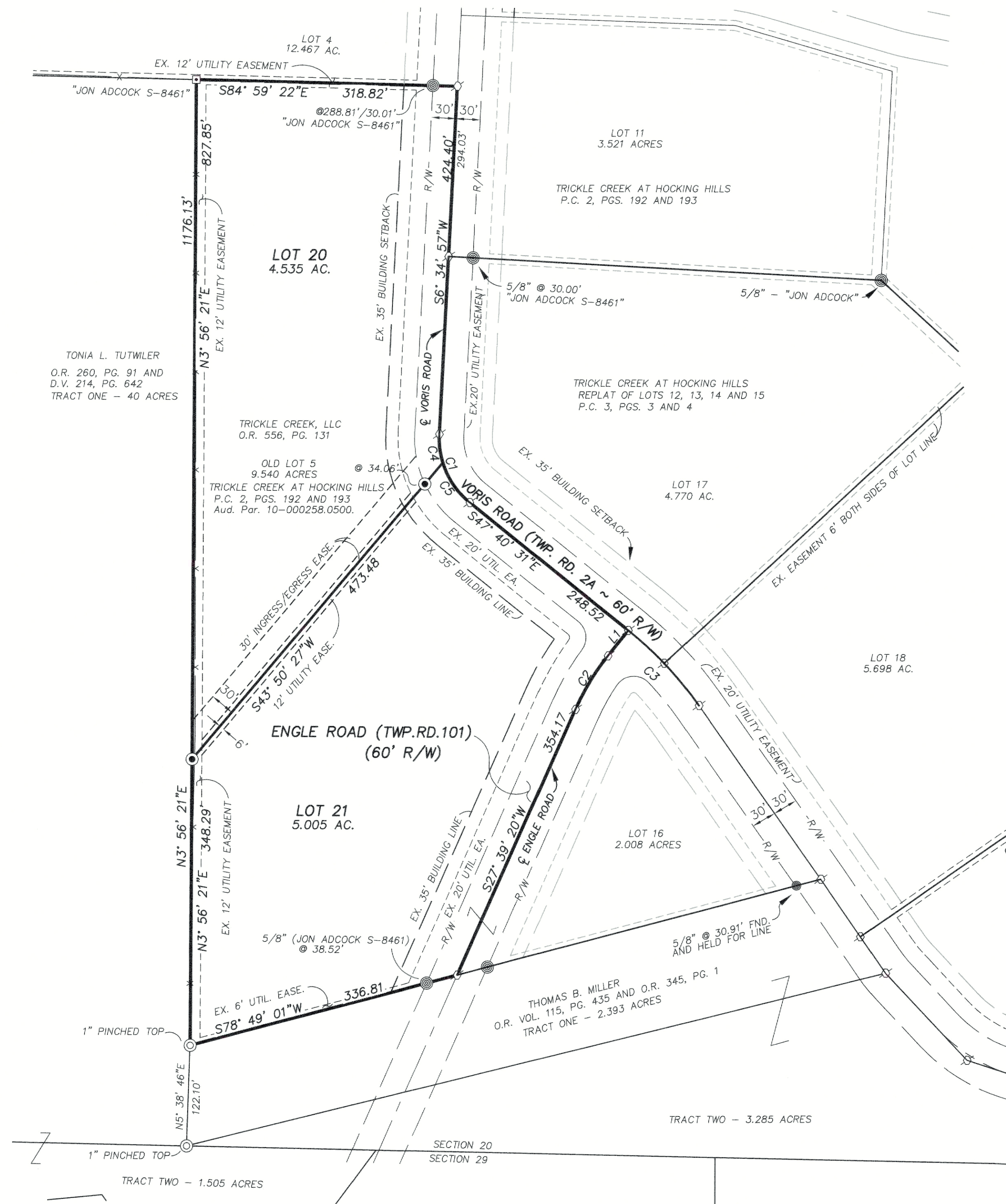


TRICKLE CREEK AT HOCKING HILLS



REPLAT OF LOT 5
 BEING A SUBDIVISION OF 9.540 ACRES
 NOW TO BE KNOWN AS LOTS 20 AND 21

SITUATED IN THE EAST HALF OF THE SOUTHWEST QUARTER OF SECTION 20, TOWNSHIP 15N, RANGE 17W,
 CONGRESS LANDS EAST OF THE SCIOTO RIVER
 MARION TOWNSHIP, HOCKING COUNTY, OHIO



- LEGEND:**
- IRON PIN FOUND (AS NOTED)
 - IRON PIPE FOUND (AS NOTED)
 - IRON PIN SET - 5/8" X 30" REBAR WITH 1-1/4" PLASTIC CAP INSCRIBED "BI GROUP S-6872/S-7740"
 - ⊗ RAILROAD SPIKE FOUND
 - 5/8" REBAR FOUND IN CONCRETE CAP INSCRIBED "JON ADCOCK S-8461"
- ALL MONUMENTS FOUND IN GOOD CONDITION.

- LINETYPE LEGEND:**
- R/W — RIGHT-OF-WAY LINE
 - - - SETBACK LINE
 - · - · - EASEMENT LINE
 - — — BOUNDARY LINE

BASIS OF BEARINGS:
 BEARINGS SHOWN HEREON ARE BASED ON GPS OBSERVATIONS, BEING THE OHIO STATE PLANE COORDINATE SYSTEM, SOUTH ZONE, NAD 1983.

Curve #	Radius	Delta	Length	Chord Direction	Chord Length
C1	100.00	54° 15' 28"	94.70'	S20° 32' 47"E	91.20'
C2	300.00'	14° 40' 08"	76.81'	S34° 59' 24"W	76.60'
C3	450.00'	16° 02' 37"	126.01'	N39° 39' 13"W	125.60'
C4	100.00	20° 09' 37"	35.19'	S3° 29' 51"E	35.00'
C5	100.00	34° 05' 52"	59.51'	S30° 37' 36"E	58.64'

REFERENCE DOCUMENTS

- PLATS:**
 PLAT CABINET 3, PAGES 3 & 4
 PLAT CABINET 2, PAGES 192 & 193
- DEEDS:**
 OFFICIAL RECORD 115, PAGE 435
 OFFICIAL RECORD 345, PAGE 1
 OFFICIAL RECORD 260, PAGE 91
 DEED VOLUME 214, PAGE 642
 OFFICIAL RECORD 556, PAGE 131

Line Table

LINE #	Direction	Distance
L1	S42° 19' 29"W	39.77'

2/2

FIELD	DRAFT	CHECK
DLC	DLC	DLC
JOB NO.:		
DATE: JULY 16, 2024		
SCALE: 1"=100'		